

# House and Land Package



**vivente**

HAMMOND PARK



## The Vue Grand

BED **4** BATH **2** CAR **2**

**\$594,000**



Lot 6 Whadjuk Drive, Hammond Park

Land Size 464 sqm

House Size 276 sqm

Frontage 15 m

Orientation South

**Your House Specialist**

Simon Mort

0439 894 181

morts@venturahomes.com.au

### Specification Highlights

- Daikin ducted reverse cycle air conditioning
- Essastone benchtop to kitchen, ensuite and bathroom
- 900mm wide Fisher & Paykel appliances
- Quality floor finishes, fittings and fixtures
- Rinnai instantaneous hot water unit
- Paving to driveway, alfresco and porch
- Price includes BONUS boundary fencing
- Plus a FREE front yard landscaping package

See page 2 for the plan

**RICHARD NOBLE**

PROPERTY INTEGRITY COMMUNITY

**Call us on 0407 945 834**

**viventeliving.com.au**

# House and Land Package



# vivente

HAMMOND PARK

## The Vue Grand

BED

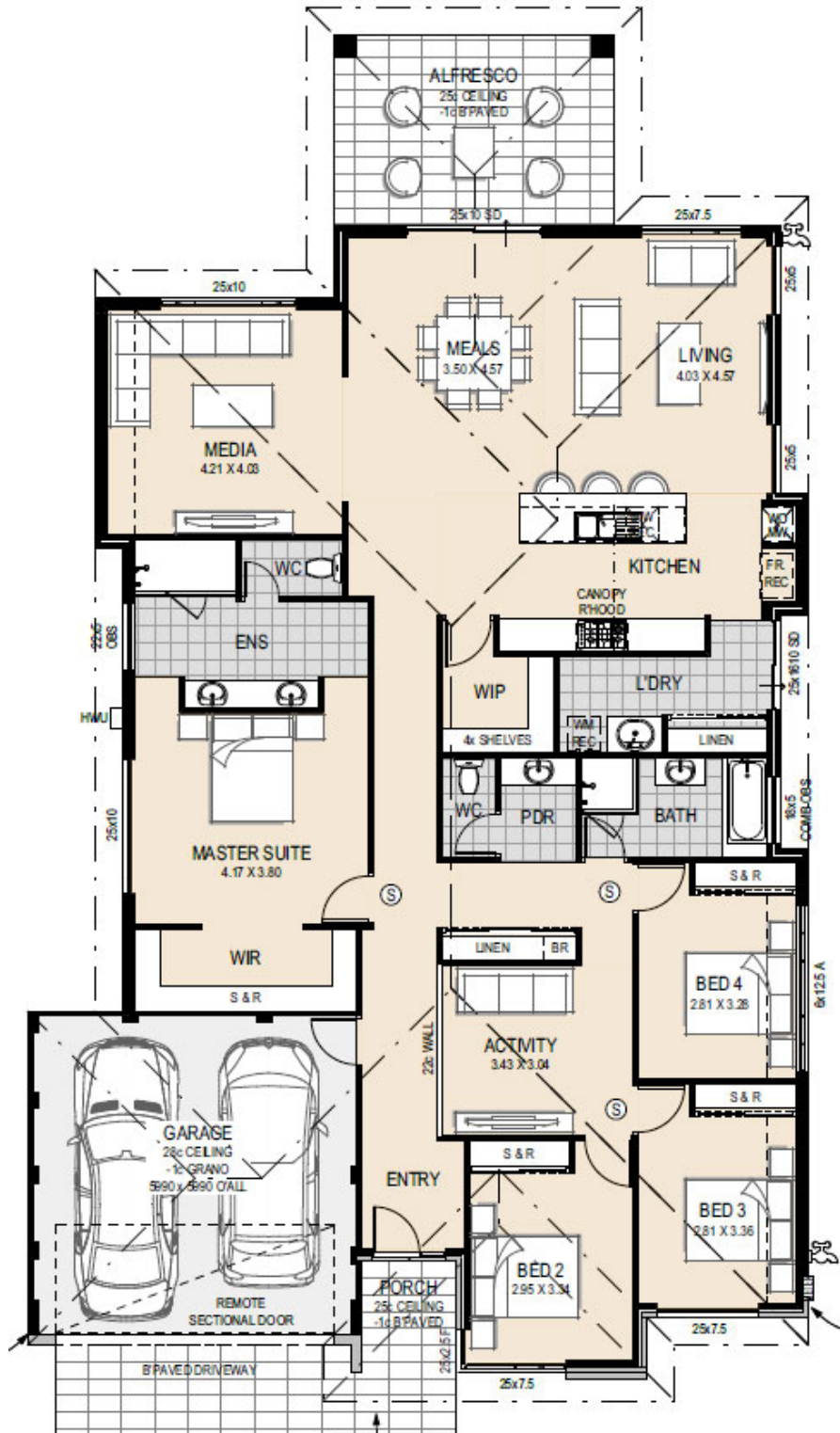
4

BATH

2

CAR

2



# RICHARD NOBLE

PROPERTY INTEGRITY COMMUNITY

Call us on 0407 945 834

[viventeliving.com.au](http://viventeliving.com.au)

Disclaimer: The details contained in this house and land package were correct at the time of listing however pricing and land availability is subject to change. All care has been taken to ensure the home design shown is suitable for the advertised lot however design and specification is subject to shire approvals. Photographs, plans and the building component are supplied by the builder and Richard Noble & Company are not responsible for any changes or omissions supplied by the builder. A separate building contract will be entered into with the participating builder. Changes made to the house design will affect the total cost of the package - unless a provisional sum for site works is detailed it is assumed that site works are not included in the package. Site work allowances, where specified, are subject to a licensed survey and engineer reports.