

House and Land Package



vivente

HAMMOND PARK



The Sunset Bay

BED

4

BATH

2

CAR

2

\$585,990



Lot 6 Whadjuk Drive, Hammond Park

Land Size 464 sqm

House Size 289 sqm

Frontage 15 m

Orientation South

Your House Specialist

Simon Mort

0439 894 181

morts@venturahomes.com.au

Specification Highlights

- Daikin ducted reverse cycle air conditioning
- Essastone benchtop to kitchen, ensuite and bathroom
- 900mm wide Fisher & Paykel appliances
- Quality floor finishes, fittings and fixtures
- Rinnai instantaneous hot water unit
- Paving to driveway, alfresco and porch
- Price includes BONUS boundary fencing
- Plus a FREE front yard landscaping package

See page 2 for the plan

RICHARD NOBLE

PROPERTY INTEGRITY COMMUNITY

Call us on 0407 945 834

viventeliving.com.au

House and Land Package



vivente

HAMMOND PARK

The Sunset Bay

BED

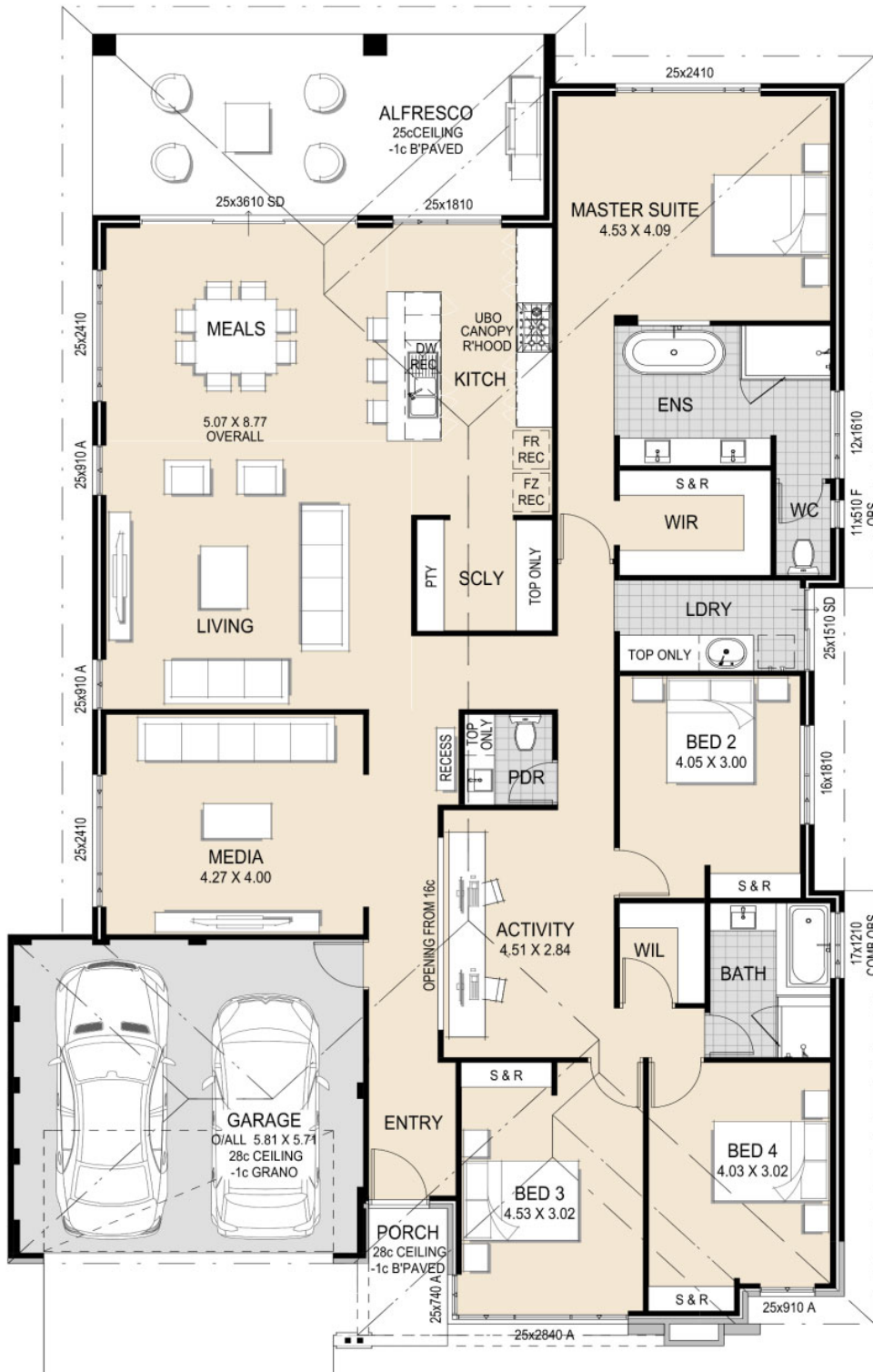
4

BATH

2

CAR

2



RICHARD NOBLE

PROPERTY INTEGRITY COMMUNITY

Call us on 0407 945 834

viventeliving.com.au

Disclaimer: The details contained in this house and land package were correct at the time of listing however pricing and land availability is subject to change. All care has been taken to ensure the home design shown is suitable for the advertised lot however design and specification is subject to shire approvals. Photographs, plans and the building component are supplied by the builder and Richard Noble & Company are not responsible for any changes or omissions supplied by the builder. A separate building contract will be entered into with the participating builder. Changes made to the house design will affect the total cost of the package - unless a provisional sum for site works is detailed it is assumed that site works are not included in the package. Site work allowances, where specified, are subject to a licensed survey and engineer reports.