

House and Land Package



vivente

HAMMOND PARK



London

BED

4

BATH

2

CAR

2

\$511,635

Lot 361 Genoa Parkway, Hammond Park

Land Size 365 sqm

House Size 186 sqm

Frontage 12.5 m

Orientation North

Price includes provisional site work costs of \$14,320



Your House Specialist

Serg Soussorov

0487 525 288

soussorovs@homestart.net.au

Specification Highlights

- Designer mixer taps throughout and Instantaneous Hot Water System
- Quality flooring and window treatments throughout home
- 900mm Stainless Steel European Appliances
- Paved Alfresco and Driveway
- 6 star energy rating
- Lifetime Structure Warranty, giving you peace of mind for the lifetime of your occupancy
- Price includes BONUS boundary fencing
- Plus a FREE front yard landscaping package

See page 2 for the plan

RICHARD NOBLE

PROPERTY INTEGRITY COMMUNITY



Call us on 0407 945 834

@rno1913 viventeliving.com.au

House and Land Package



vivente

HAMMOND PARK

London

BED

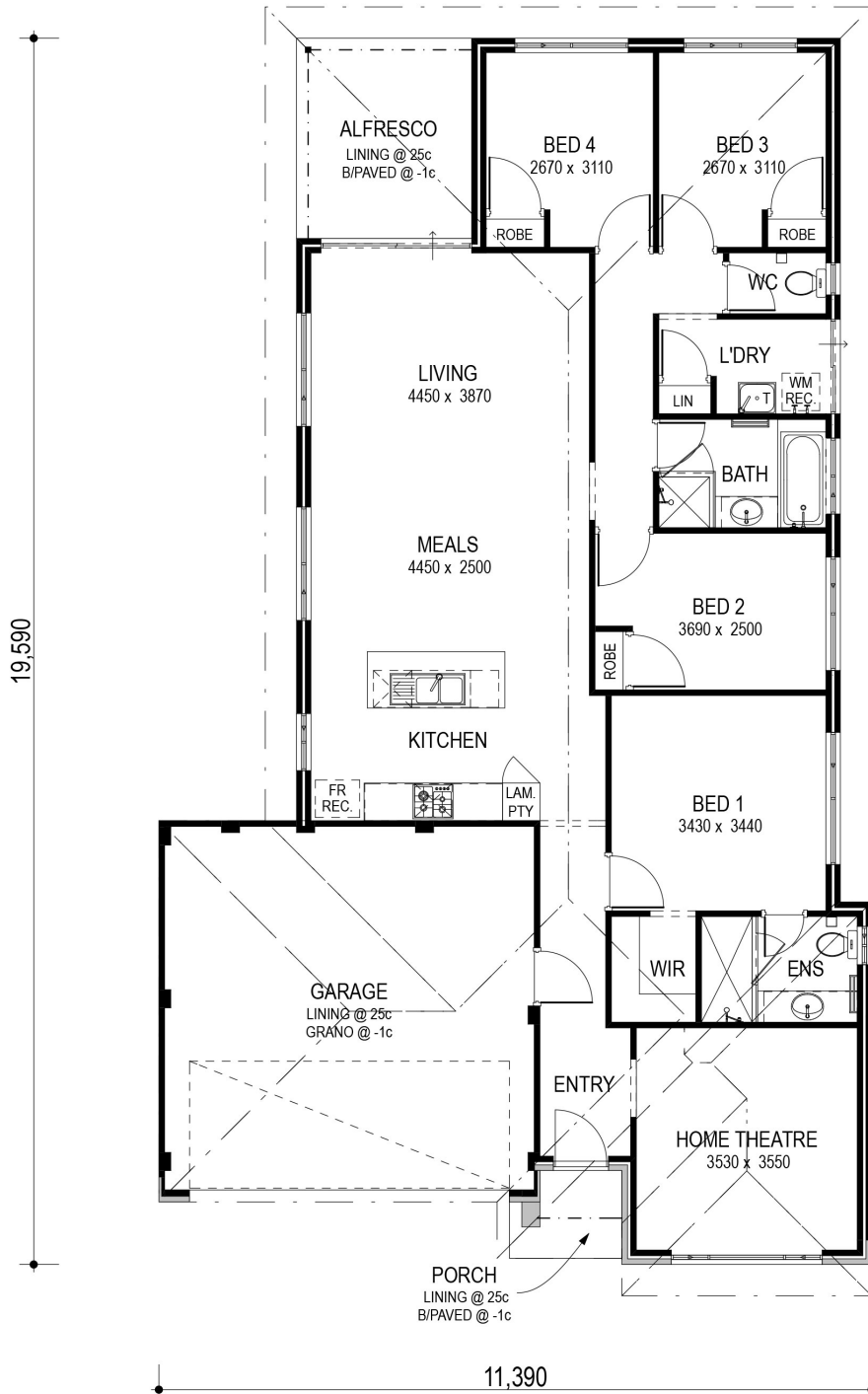
4

BATH

2

CAR

2



RICHARD NOBLE
PROPERTY INTEGRITY COMMUNITY



Call us on 0407 945 834

@moble1913 vivente.living.com.au

Disclaimer: The details contained in this house and land package were correct at the time of listing however pricing and land availability is subject to change. All care has been taken to ensure the home design shown is suitable for the advertised lot however design and specification is subject to shire approvals. Photographs, plans and the building component are supplied by the builder and Richard Noble & Company are not responsible for any changes or omissions supplied by the builder. A separate building contract will be entered into with the participating builder. Changes made to the house design will affect the total cost of the package - unless a provisional sum for site works is detailed it is assumed that site works are not included in the package. Site work allowances, where specified, are subject to a licensed survey and engineer reports.