

# House and Land Package



**vivente**

HAMMOND PARK



## The Marbella

BED **4** BATH **2** CAR **2**

**\$468,770**

Lot 27 Whadjuk Drive, Hammond Park

Land Size 375 sqm

House Size 200 sqm

Frontage 12.5 m

Orientation North

Price includes provisional site work costs of \$11,000

### Specification Highlights

- Essastone benchtops throughout
- Carpet to all bedrooms and theatre
- 900mm or twin 600mm SMEG appliances
- Classy high ceilings
- Choice of 6 elevations
- Fujitsu air conditioning
- Price includes BONUS boundary fencing
- Plus a FREE front yard landscaping package



**Impressions**

*The Home Builder*

**Your House Specialist**

Nilay Shah

0421 785 344

[nilay@impressions.net.au](mailto:nilay@impressions.net.au)

See page 2 for the plan

**RICHARD NOBLE**

PROPERTY INTEGRITY COMMUNITY

**Call us on 0407 945 834**

**[viventeliving.com.au](http://viventeliving.com.au)**

# House and Land Package



vivente

HAMMOND PARK

## The Marbella

BED

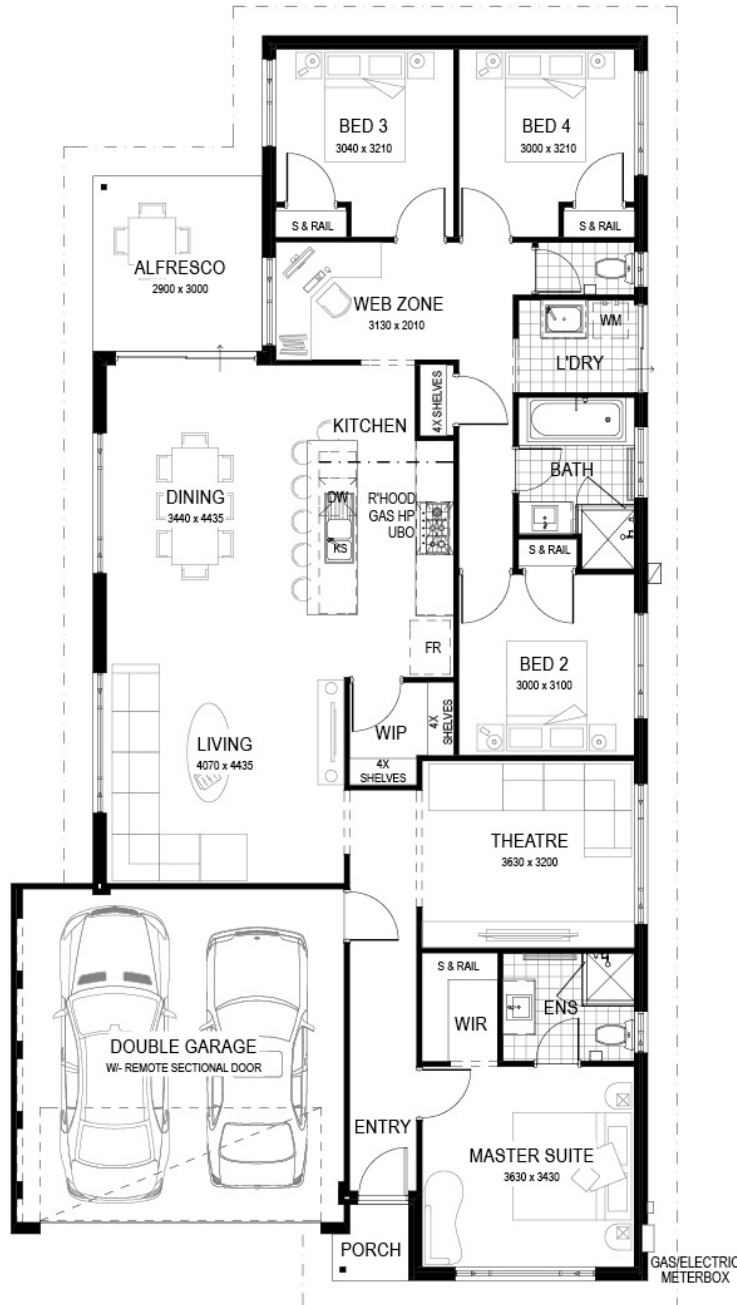
4

BATH

2

CAR

2



# RICHARD NOBLE

PROPERTY INTEGRITY COMMUNITY

Call us on 0407 945 834

[vivente.com.au](http://vivente.com.au)

Disclaimer: The details contained in this house and land package were correct at the time of listing however pricing and land availability is subject to change. All care has been taken to ensure the home design shown is suitable for the advertised lot however design and specification is subject to shire approvals. Photographs, plans and the building component are supplied by the builder and Richard Noble & Company are not responsible for any changes or omissions supplied by the builder. A separate building contract will be entered into with the participating builder. Changes made to the house design will affect the total cost of the package - unless a provisional sum for site works is detailed it is assumed that site works are not included in the package. Site work allowances, where specified, are subject to a licensed survey and engineer reports.