

House and Land Package



vivente

HAMMOND PARK



Munich

BED

4

BATH

2

CAR

2

\$540,990

Lot 26 Whadjuk Drive, Hammond Park

Land Size 450 sqm

House Size 224 sqm

Frontage 15 m

Orientation North

Price includes provisional site work costs of \$12,000

Specification Highlights

- \$50,000 luxury kitchen
- Ford & Doonan reverse cycle air-conditioning
- Stone benchtops throughout
- 450 x 450 porcelain floor tiles
- European design fittings and fixtures
- Choice of 5 elevations
- Price includes BONUS boundary fencing
- Plus a FREE front yard landscaping package



Your House Specialist

Paul Lambert

0416 070 031

paul.lambert@homegroupwa.com.au

See page 2 for the plan

RICHARD NOBLE

PROPERTY INTEGRITY COMMUNITY

Call us on 0407 945 834

vivente.living.com.au

House and Land Package



vivente

HAMMOND PARK

Munich

BED

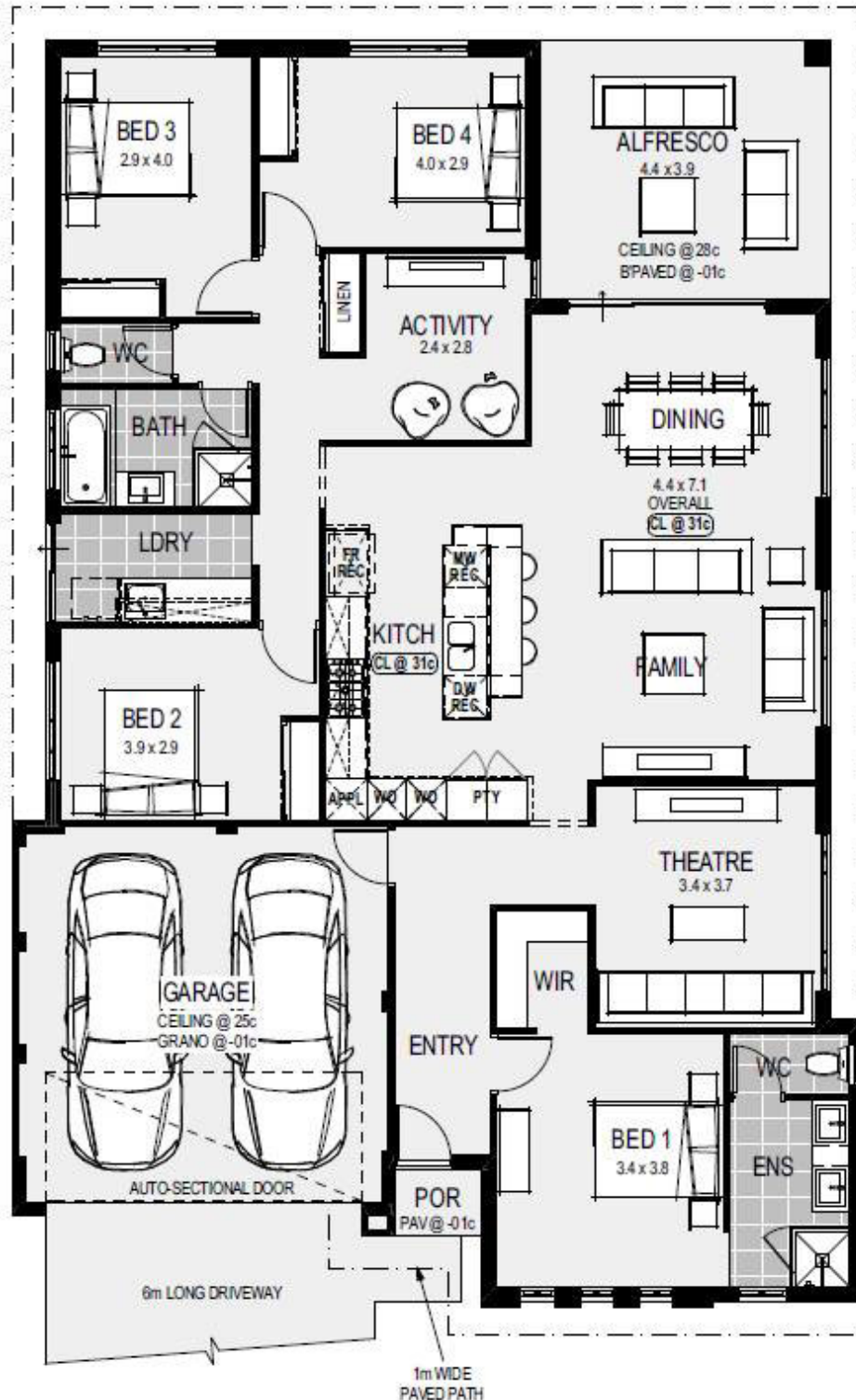
4

BATH

2

CAR

2



RICHARD NOBLE

PROPERTY INTEGRITY COMMUNITY

Call us on 0407 945 834

viventeliving.com.au

Disclaimer: The details contained in this house and land package were correct at the time of listing however pricing and land availability is subject to change. All care has been taken to ensure the home design shown is suitable for the advertised lot however design and specification is subject to shire approvals. Photographs, plans and the building component are supplied by the builder and Richard Noble & Company are not responsible for any changes or omissions supplied by the builder. A separate building contract will be entered into with the participating builder. Changes made to the house design will affect the total cost of the package - unless a provisional sum for site works is detailed it is assumed that site works are not included in the package. Site work allowances, where specified, are subject to a licensed survey and engineer reports.