

# House and Land Package



**vivente**

HAMMOND PARK



## The Luxe

BED

3

BATH

2

CAR

2

# \$439,990

Lot 215 Whadjuk Drive, Hammond Park

Land Size 375 sqm

House Size 183 sqm

Frontage 12.5 m

Orientation North

**B1**  
HOMES

**Your House Specialist**

Melanie Mclean

0405 640 034

[melanie@b1homes.com.au](mailto:melanie@b1homes.com.au)

### Specification Highlights

- 30c ceilings throughout (excluding alfresco, garage and porch)
- Daikin reverse cycle air conditioning throughout
- 450x450 ceramic tiles to main living areas, carpet to bedrooms and theatre from builders standard range
- 900mm Westinghouse stainless steel range hood, oven and hot plate
- 20mm Essastone bench tops to kitchen
- Lifetime structural guarantee
- Price includes BONUS boundary fencing
- Plus a FREE front yard landscaping package

See page 2 for the plan

# RICHARD NOBLE

PROPERTY INTEGRITY COMMUNITY

**Call us on 0407 945 834**

**[viventeliving.com.au](http://viventeliving.com.au)**

# House and Land Package



# vivente

HAMMOND PARK

## The Luxe

BED

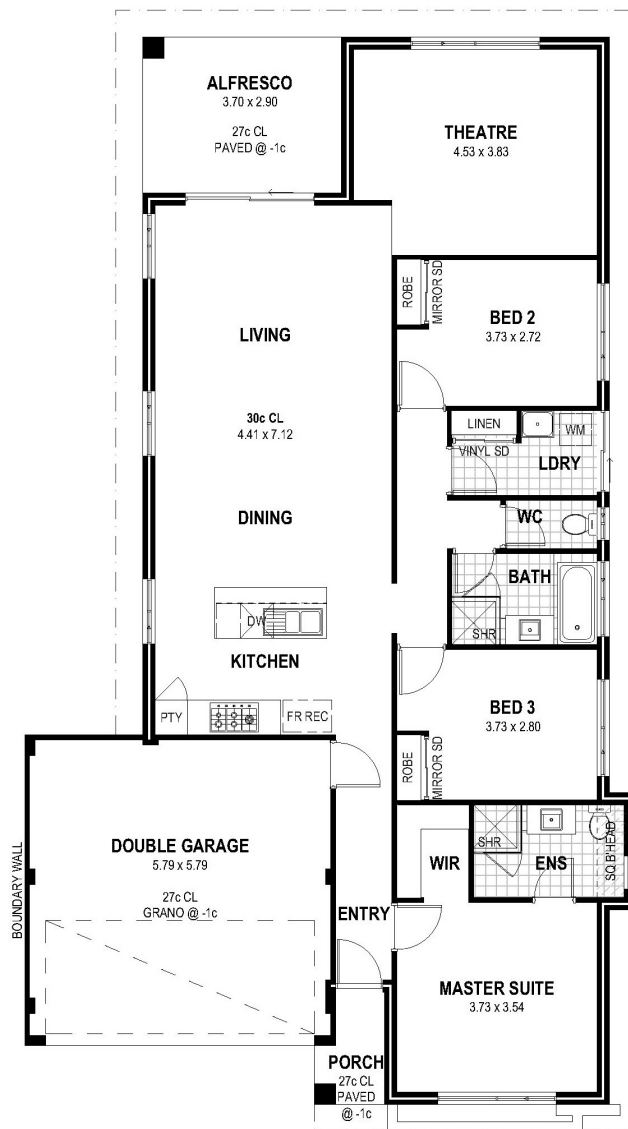
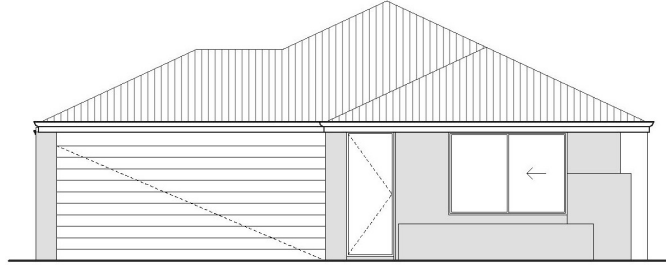
3

BATH

2

CAR

2



# RICHARD NOBLE

PROPERTY INTEGRITY COMMUNITY

Call us on 0407 945 834

[viventeliving.com.au](http://viventeliving.com.au)

Disclaimer: The details contained in this house and land package were correct at the time of listing however pricing and land availability is subject to change. All care has been taken to ensure the home design shown is suitable for the advertised lot however design and specification is subject to shire approvals. Photographs, plans and the building component are supplied by the builder and Richard Noble & Company are not responsible for any changes or omissions supplied by the builder. A separate building contract will be entered into with the participating builder. Changes made to the house design will affect the total cost of the package - unless a provisional sum for site works is detailed it is assumed that site works are not included in the package. Site work allowances, where specified, are subject to a licensed survey and engineer reports.